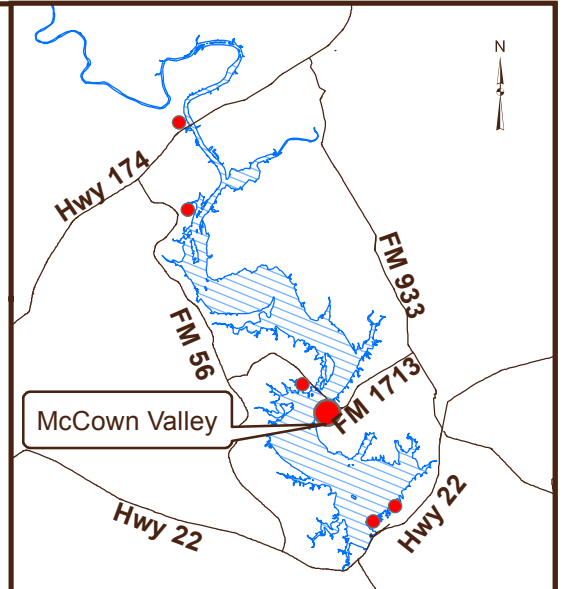













McCown Valley Park

Whitney Lake



-  Campground Entrance
-  Restrooms/Showers
-  Trailer Dump Station
-  Boat Launch
-  Playground
-  Swim Beach
-  Equestrian Stalls
-  Group Use Shelter
-  Horse Trailer Parking



Entire park reservation only

- 30 amp electric sites: 0-31, 33, 35, 47
- 50 amp electric sites: 32, 34, 36-46
- Non-Electric sites: 48-60
- 50 amp screen shelters: 62-63
- 20 amp screen shelters: 61, 64, 65
- 50 amp equestrian sites: 66-104

Park Address
 283 McCown Valley Park Rd
 Whitney, TX 76692

Boat Ramp Location
 97°24'1.543"W 31°56'54.94"N

Reservations
www.recreation.gov
 1-877-444-6777

Scan Code
 For More
 Information
 On Whitney
 Lake





**US Army Corps
of Engineers®**

WELCOME TO WHITNEY LAKE

We hope your stay with us will be an enjoyable one and that you will return again in the near future. Please remember that it is your responsibility to be aware of the rules and regulations governing this and other Corps of Engineers Projects.

Following are some items we ask you to pay particular attention to:

- Camping is permitted at designated campsites only.
- Campsites are limited to one sleeping vehicle and no more than 10 people per campsite at any one time (including visitors). Campers may have up to 1 RV and 2 tents or 3 tents per campsite.
- No parking on grass.
- Gray water may not be released onto the ground.
- Checkout time for campers is 2:00 p.m.; check in time is 3:00 p.m. so please be considerate of the campers coming in after your stay.
- Length of stay on the lake is limited to 14 consecutive days, and must not exceed 14 days total within any 30-day period.
- Quiet hours are from 10:00 p.m. until 6:00 a.m. (NO GENERATORS RUNNING) which is also when the park gates are locked. There will be an emergency exit with automatic gate arm for exits, but no access back into the park after 10:00 pm.
- All pets must be on a leash no greater than six feet while in the park; no pets allowed in the beach area.
- Unlicensed vehicles are not permitted to operate in park areas. NO GOLF CARTS. Operators of all vehicles must be licensed.

For a more complete listing of the rules and regulations, you are urged to familiarize yourself with the brochure *Rules and Regulations Governing Public Use of Corps of Engineers Water Resources Development Projects*.

If you have additional questions or need assistance, our Project Office hours are 8 a.m. to 4:30 p.m. Monday through Friday and our contact number is 254-622-3332.

**U.S. ARMY CORPS OF ENGINEERS
Whitney Lake Project Office
285 CR 3602
Clifton, TX 76634
254-622-3332**

EMERGENCY PHONE NUMBERS:

Bosque County Sheriff
Hill County Sheriff
Texas Parks & Wildlife

254-435-2363
254-582-5313
254-799-2446

FOR RESERVATIONS CALL OR GO ONLINE:

1-877-444-6777

www.recreation.gov